

## /// ROTARY EVAPORATORS

IKA rotary evaporators set new standards for safety, efficiency and ease of use. These products offer excellent distilling solutions. All IKA RV 10 evaporators are equipped with an automated lift including a safety stop function. More safety features are: interval operation, smooth start, end position recognition, automated lift-out in case of power outage as well as a timer function.



### RV 10 AUTO PRO

/// The flagship

RV 10 auto pros' features include an innovative handling concept with a bright, high-contrast TFT color display, an integrated vacuum controller, cooling water monitoring and mature safety standards.

#### EFFICIENT AND COST-EFFECTIVE OPERATIONS

These include automatic control of the vacuum and cooling water volume.

#### INNOVATIVE FEATURES

Smooth start, interval mode, right-left operation in interval mode, and the timer function for time-lapse tests make everyday work in the laboratory much easier.

#### SAFETY FEATURES

Safety is ensured by the motorized lift with safety stop function. Additional safety for users is provided by e.g. individually adjustable temperature safety circuits, protection against boiling dry and adjustable end-point recognition to prevent glass breakage.

① **RV 3 V**

Ident. No. 0010003324

② **RV 3 V-C**

Ident. No. 0010003328

③ **RV 3 FLEX**

Ident. No. 0010003331

④ **RV 3 dry ice condensor**

Ident. No. 0010006363

⑤ **RV 3 dry ice condensor C**

Ident. No. 0010006362


① **RV 8 V**

Ident. No. 0010003482

② **RV 8 V-C**

Ident. No. 0010003485

③ **RV 8 FLEX**

Ident. No. 0010003488

④ **RV 8 dry ice condensor**

Ident. No. 0010006361

⑤ **RV 8 dry ice condensor C**

Ident. No. 0010006360


**TECHNICAL DATA**

	RV 3	RV 8
Motor type	Brushless DC drive motor	Brushless DC drive motor
Speed range	20 – 300 rpm	5 – 300 rpm
Speed display	Scale	Digital
Heating temperature range	RT – 99 °C	RT – 180 °C
Type of cooling	Vertical	Vertical
Cooling surface	1500 cm <sup>2</sup>	1500 cm <sup>2</sup>
Soft start	Yes	Yes
Head angle adjustable	0 to 60 °	0 to 45 °
Stroke displacement	150 mm, manual	120 mm, manual
Vacuum controller	Optional	Optional
Dimensions (W × H × D) without glass parts	440 × 530 × 330 mm	510 × 490 × 345 mm
Protection class acc. to DIN EN 60529	IP 20	IP 20

Integrated safety  
lift-out function

- ① **RV 10 digital V**  
Ident. No. 0010004799
- ② **RV 10 digital V-C**  
Ident. No. 0010004802
- ③ **RV 10 digital FLEX**  
Ident. No. 0010004805
- ④ **RV 10 digital dry ice condensor**  
Ident. No. 0010006365
- ⑤ **RV 10 digital dry ice condensor C**  
Ident. No. 0010006364



TECHNICAL DATA

RV 10 DIGITAL

Motor type	Brushless DC drive motor
Speed range	5 – 280 rpm
Speed display	Digital
Clockwise and counter-clockwise	Yes
Heating temperature range	RT – 180 °C
Type of cooling	Vertical
Cooling surface	1500 cm <sup>2</sup>
Filling volume max.	4 l
Soft start	Yes
Head angle adjustable	0 to 45 °
Stroke displacement	140 mm, motorized
Setting of lower end stop	60 mm, contact free
Vacuum controller	Optional
Dimensions (W x H x D) without glass parts	500 x 430 x 440 mm
Protection class acc. to DIN EN 60529	IP 20




① **RV 10 auto V**

Ident. No. 0010004835

② **RV 10 auto V-C**

Ident. No. 0010004838

③ **RV 10 auto FLEX**

Ident. No. 0010004841

④ **RV 10 auto pro V**

Ident. No. 0010004815\*

⑤ **RV 10 auto pro V-C**

Ident. No. 0010004812\*

⑥ **RV 10 auto pro FLEX**

Ident. No. 0010004818\*

\*Pro packages include VACSTAR digital

**TECHNICAL DATA**
**RV 10 AUTO**

Motor type	Brushless DC drive motor
Speed range	5 – 300 rpm
Speed display	Digital
Clockwise and counter-clockwise	Yes
Heating temperature range	RT – 180 °C
Type of cooling	Vertical condenser
Cooling surface	1500 cm <sup>2</sup>
Filling volume max.	4 l
Soft start	Yes
Head angle adjustable	0 to 45 °
Stroke displacement	140 mm, motorized
Setting of lower end stop	60 mm, contact free
Vacuum controller	Integrated
Dimensions (W × H × D) without glass parts	500 × 430 × 440 mm
Protection class acc. to DIN EN 60529	IP 20





RV 10.1

RV 10.1 enlarged surface



RV 10.3

RV 10.4



RV 10.400

RV 10.500



RV 10.600

RV 10.606



RV 10.84

RV 10.301

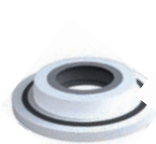
Product	Description	Ident. No.
<b>ACCESSORIES RV 10, RV 8, RV 3</b>		
RV 10.1	Set of glassware, vertical	0003655300
RV 10.10	Set of glassware, vertical, coated	0003755400
RV 10.1 enlarged surface	Vertical-condenser, enlarged surface	0020019652
RV 10.10 enlarged surface	Vertical-condenser, coated, enlarged surface	0020019654
RV 10.2	Set of glassware, diagonal	0003755300
RV 10.20	Set of glassware, diagonal, coated	0003755500
RV 10.3	Vertical-intensive condenser, manifold	0003741000
RV 10.30	Vertical-intensive condenser, manifold, coated	0003741100
RV 10.4	Dry ice condensor	0003742000
RV 10.40	Dry ice condensor, coated	0003742100
RV 10.5	Vertical-condenser, reflux	0003743000
RV 10.50	Vertical-condenser, reflux, coated	0003743100
RV 10.6	Vertical-intensive condenser, reflux	0003744000
RV 10.60	Vertical-intensive condenser, reflux, coated	0003744100
RV 05.10	Balljoint clamp	0000736600
RV 10.88	Clamp, NS 29	0003683300
RV 10.400	Evaporation cylinder, NS 29/32, 500 ml	0003738800
RV 10.401	Evaporation cylinder, NS 29/32, 1500 ml	0003738900
RV 10.500	Foam brake, NS 29/32	0003739200
RV 10.600	Distilling spider, NS 29/32, 6 sleeves	0003739400
RV 10.601	Distilling spider, NS 29/32, 12 sleeves	0003739500
RV 10.602	Distilling spider, NS 29/32, 20 sleeves	0003739600
RV 10.610	Distilling sleeve, 20 ml	0003919400
RV 10.606	Distilling spider with 5 flasks, 50 ml	0003740800
RV 10.607	Distilling spider with 5 flasks, 100 ml	0003740900
RV 10.90	Evaporation flask, NS 24/29, 50 ml	0003741200
RV 10.91	Evaporation flask, NS 24/29, 100 ml	0003741300
RV 10.80	Evaporation flask, NS 29/32, 50 ml	0003740100
RV 10.800	Evaporation flask, coated, NS 29/32, 50 ml	0020005330
RV 10.81	Evaporation flask, NS 29/32, 100 ml	0003740200
RV 10.810	Evaporation flask, coated, NS 29/32, 100 ml	0020005331
RV 10.82	Evaporation flask, NS 29/32, 250 ml	0003740300
RV 10.820	Evaporation flask, coated, NS 29/32, 250 ml	0020005332
RV 10.83	Evaporation flask, NS 29/32, 500 ml	0003740400
RV 10.830	Evaporation flask, coated, NS 29/32, 500 ml	0020005333
RV 10.84	Evaporation flask, NS 29/32, 1000 ml	0003740500
RV 10.840	Evaporation flask, coated, NS 29/32, 1000 ml	0004221400
RV 10.85	Evaporation flask, NS 29/32, 2000 ml	0003740600
RV 10.850	Evaporation flask, coated, NS 29/32, 2000 ml	0020005334
RV 10.86	Evaporation flask, NS 29/32, 3000 ml	0003740700
RV 10.860	Evaporation flask, coated, NS 29/32, 3000 ml	0020005335



RV 10.103



RV 10.74



RV 10.8001



RV 10.3000

Product	Description	Ident. No.
<b>ACCESSORIES RV 3, RV 8, RV 10</b>		
RV 10.100	Receiving flask, KS 35/20, 100 ml	0003742200
RV 10.101	Receiving flask, KS 35/20, 250 ml	0003742300
RV 10.102	Receiving flask, KS 35/20, 500 ml	0003742400
RV 10.103	Receiving flask, KS 35/20, 1000 ml	0003742500
RV 10.104	Receiving flask, KS 35/20, 2000 ml	0003742600
RV 10.105	Receiving flask, KS 35/20, 3000 ml	0003742700
RV 10.200	Receiving flask, coated, KS 35/20, 100 ml	0003743200
RV 10.201	Receiving flask, coated, KS 35/20, 250 ml	0003743300
RV 10.202	Receiving flask, coated, KS 35/20, 500 ml	0003743400
RV 10.203	Receiving flask, coated, KS 35/20, 1000 ml	0003743500
RV 10.204	Receiving flask, coated, KS 35/20, 2000 ml	0003743600
RV 10.205	Receiving flask, coated, KS 35/20, 3000 ml	0003743700
RV 10.300	Powder flask, NS 29/32, 500 ml	0003738200
RV 10.301	Powder flask, NS 29/32, 1000 ml	0003738300
RV 10.302	Powder flask, NS 29/32, 2000 ml	0003738400
RV 10.70	Vapor tube, NS 29/32	0003812200
RV 10.74	Vapor tube, short, NS 29/32	0003971700
RV 10.8001	Seal, PTFE, stn. steel	0003907000
RV 10.3000	Extension plate	0003859000

#### ACCESSORIES RV 3

RV 3.1	Support pole	0025004587
RV 3.4	Woulff bottle	0025004588
RV 10.5005	Hose kit	0020000552



RV 3.1



RV 3.4

#### ACCESSORIES RV 8

RV 8.1	Support pole	0004438500
RV 8.2	Mechanical end stop for RV 8	0025001342
RV 8.3	Stand pole	0025004707
RV 10.5005	Hose kit	0020000552

#### ACCESSORIES VALVE RV 10 AUTO

RV 10.4002	Magnetic valve laboratory vacuum	0003880300
RV 10.5001	Choke water valve	0003902700
RV 10.5002	Filter	0003903800
RV 10.5003	Pressure regulating valve	0003907100



RV 10.4002



RV 10.5003